

HMI/SCADA

EPA Reporting

Maintenance Planning

Central Control & Monitoring

FilterWare provides process visualization, control, data logging, report generation and remote services for process filtration, industrial ventilation and air pollution control systems. Whether the need is for a single baghouse or a plant-wide network of dust collectors, mist eliminators, stacks, scrubbers or RTOs, FilterWare is designed to be informative and dependable.

FilterWare interfaces with FilterSense diagnostic controllers such as B-PAC PLCs for baghouses. It also connects to FilterSense's CEMs, filter leak detectors, non-clogging pressure sensors and non-fouling airflow monitors. Third party controls and instrumentation are easily integrated as well.

To offer the latest capabilities and highest reliability, FilterWare is available in industry leading platforms including Wonderware InTouch, Allen-Bradley RS-View and GE Fanuc iFix.

Robust, User-Friendly & Versatile

- Reliable, secure and dependable architecture
- Time & cost saving process diagnostic tools
- Automate EPA compliance monitoring & reporting
- Expandable and easily modified to suit plant needs
- Stand-alone, multi-user or client/server systems



FilterWare automates process control, maintenance and EPA compliance needs simultaneously providing a fast return on investment. Turn a perceived EPA expense into an opportunity to improve productivity, maximize equipment performance and lower operating costs.

Process Optimization

- Control and maximize airflow to increase production
- Improve filtration efficiency to increase product recovery
- Minimize blower and compressed-air use to save energy

Maintenance Planning

- Maximize productivity of personnel
- Extend the life of filters and equipment
- Plan repairs and prevent unforeseen down time

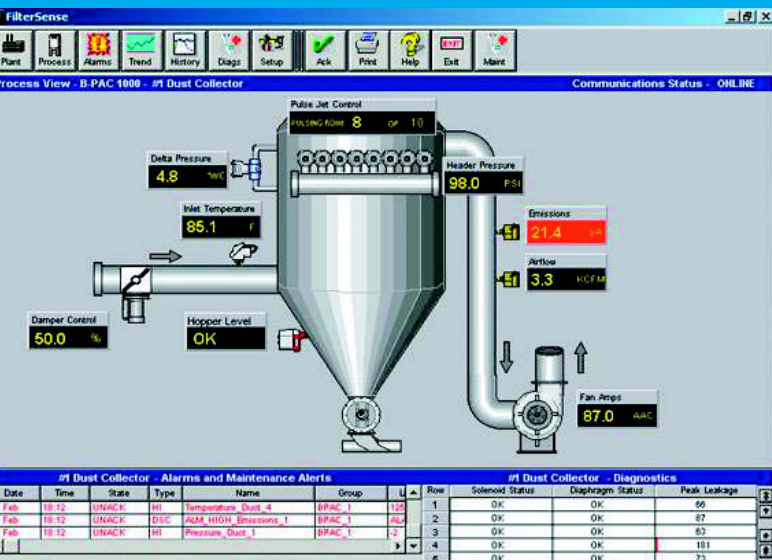
EPA Compliance

- Automatically generate reports compliant to 40 CFR
- Eliminate manual record keeping and visual inspections
- Be a good neighbor, prevent costly EPA fines & shutdowns

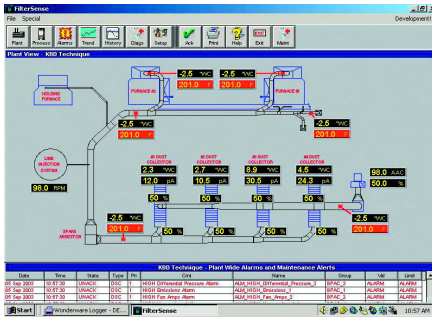
Engineering & Remote Support

FilterWare also offers the latest information technology features including e-mail alarm notification, paging, instrument calibration monitoring and remote support. With remote support, the applications and engineering expertise of FilterSense and our industry partners is available periodically or 24/7.

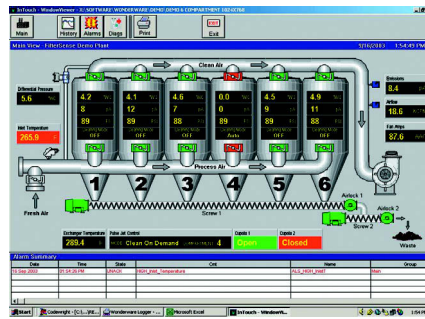
Basic remote support includes periodic data analysis and recommendations for maintenance and EPA compliance. Comprehensive support utilizes industry partners to evaluate new filter media or to perform on-site maintenance such as filter change-outs.



Overall Plant View



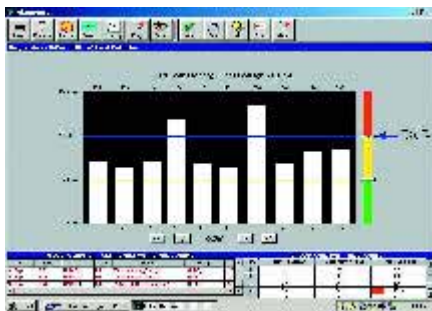
Process Views



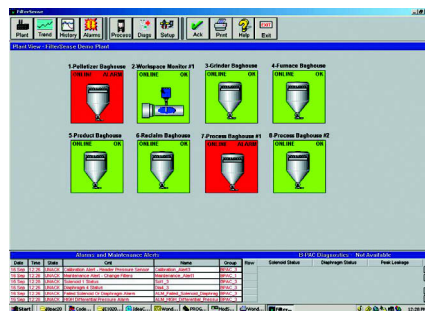
Analysis and Trending



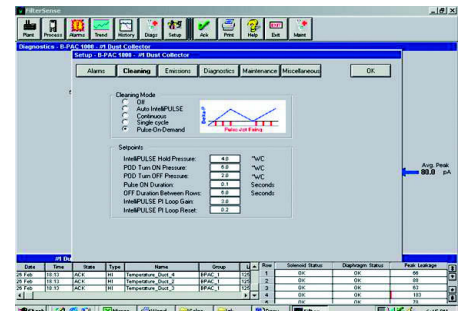
Diagnostic Tools



Alarm Status and Logs

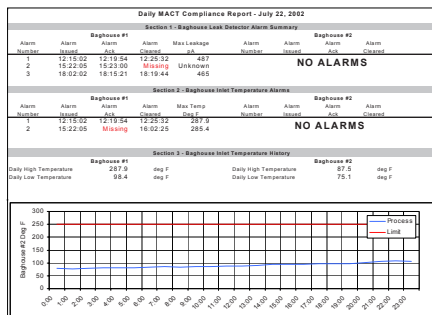


PLC & Instrument Interface

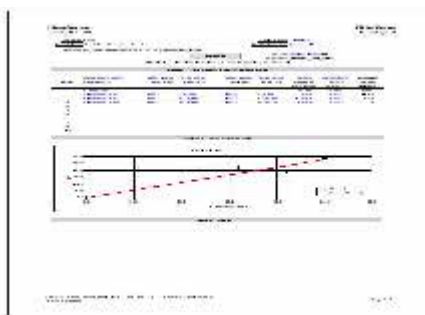


Reporting

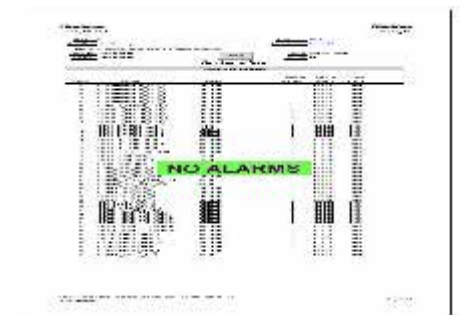
Compliant EPA Reports



Stack Testing



Process Data Logging



Automatic - Real-Time - Historical

Features

- Up to 32 nodes and 64,000 tags
- Local or server based SQL database ("Data", "Alarms" and "Events" logged to SQL)
- User and administrator security levels
- Designed for process filtration, industrial ventilation and air pollution control systems (Single process or plant-wide)
- Industry standard I/O servers, integrated OPC and DDE servers
- Optional EPA MACT reports compliant to 40 CFR 63
- Optional custom process and maintenance reports
- Optional e-mail alarm notification, paging, instrument calibration monitoring, web reporting, terminal services, thin-clients, PDAs

System Requirements

- Operating System: Windows XP with SP1
Windows 2000 Professional or Server
- Recommended Hardware: 1.2GHz Pentium III or higher
512MB RAM, 40GB free hard disk space
CD-RW and tape backup
Internet access or modem
- Turn-key PCs with pre-loaded software are available on request

FilterSense

800 Cummings Center
Beverly, MA 01915 USA
FilterSense is a Div. of Impolit Environmental Control Corp.

Tel: 978-927-4304
Fax: 978-927-4329
www.filtersense.com
info@filtersense.com
Copyright 2003